

from above to below, from left to right: hallway with site-specific artwork "A volta" by Eduard Habicher, original tiles dominate the floors, entrance with staircase

Apalazzo Mongiò dell'Elefante

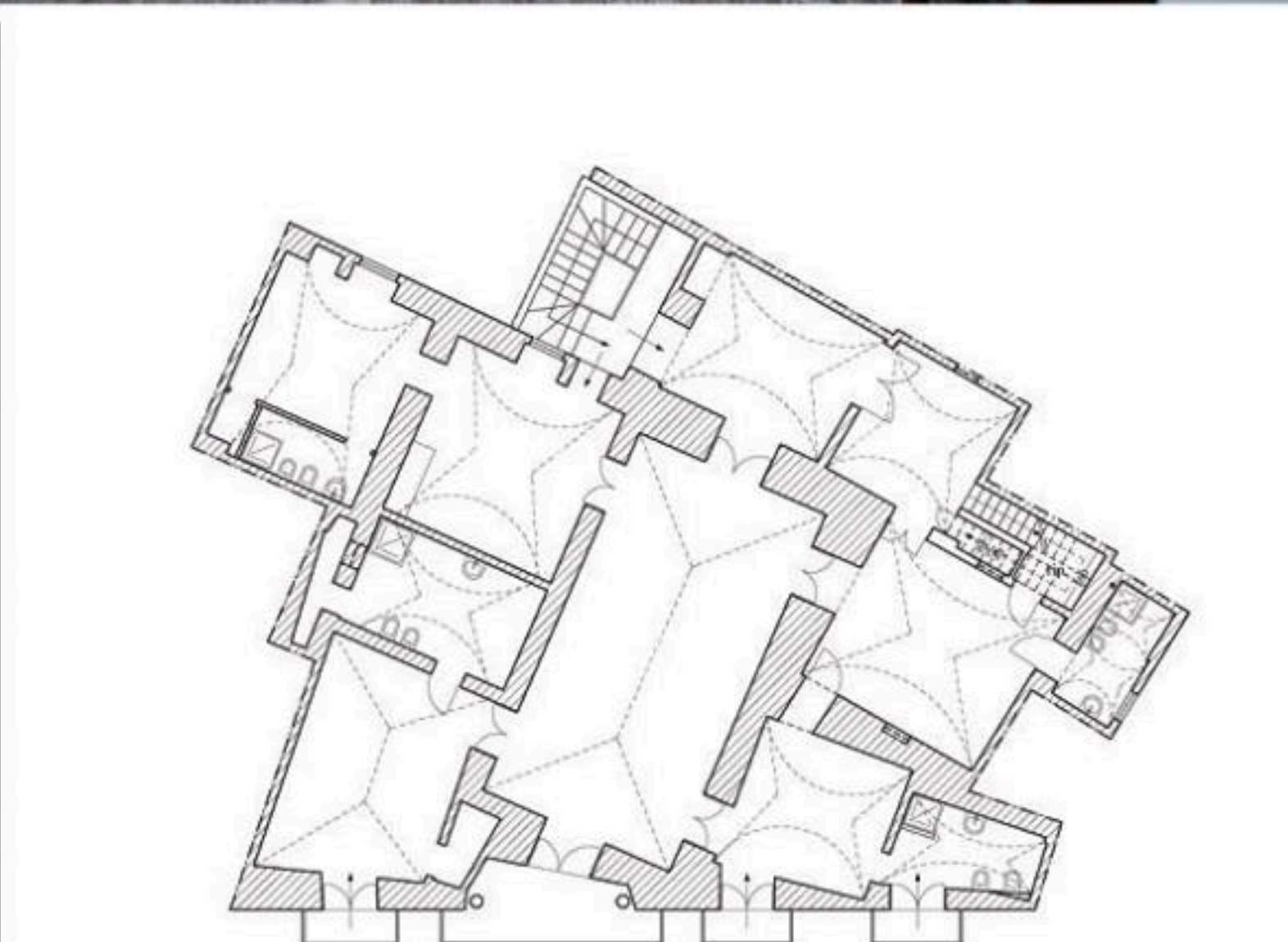
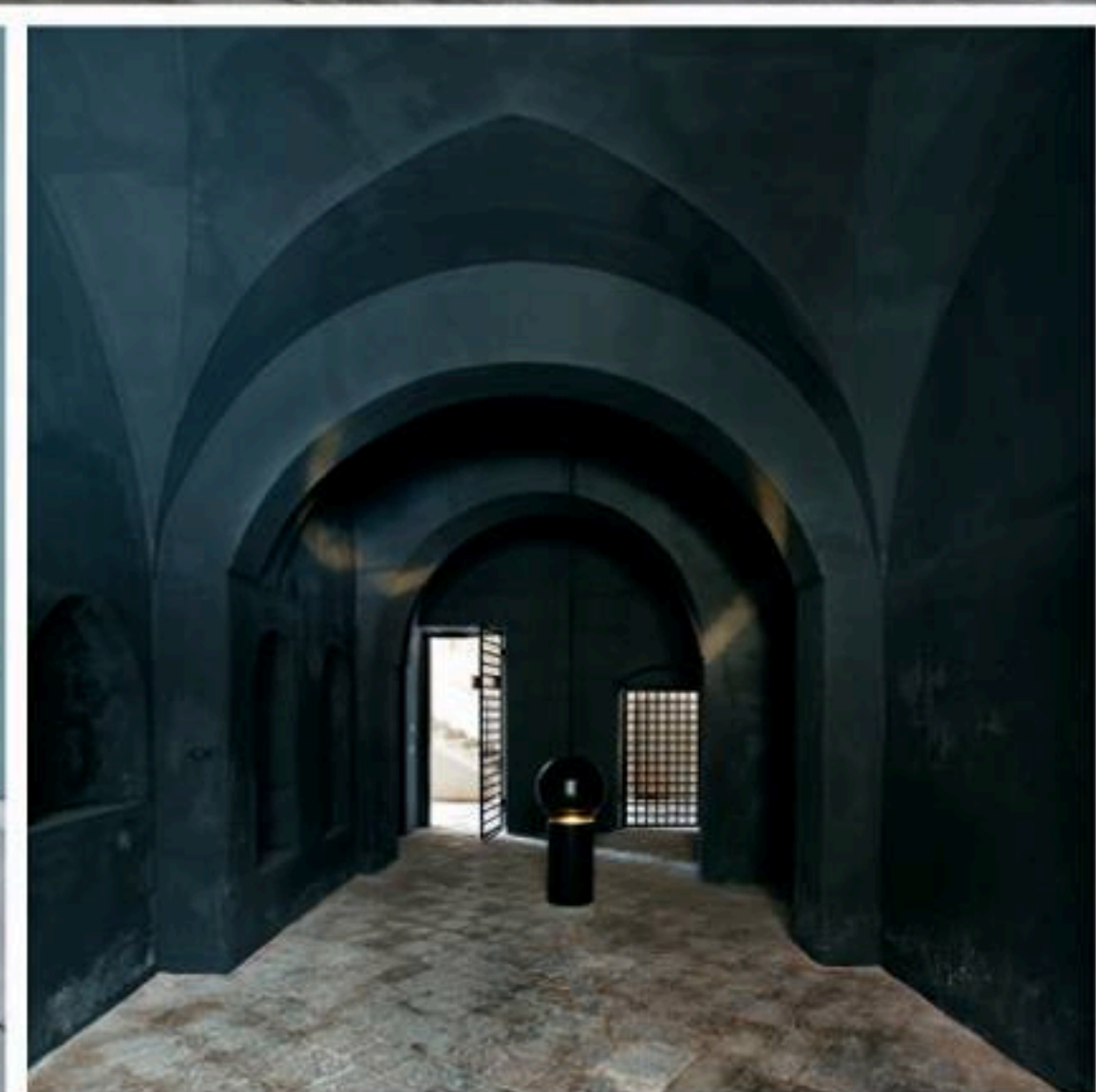
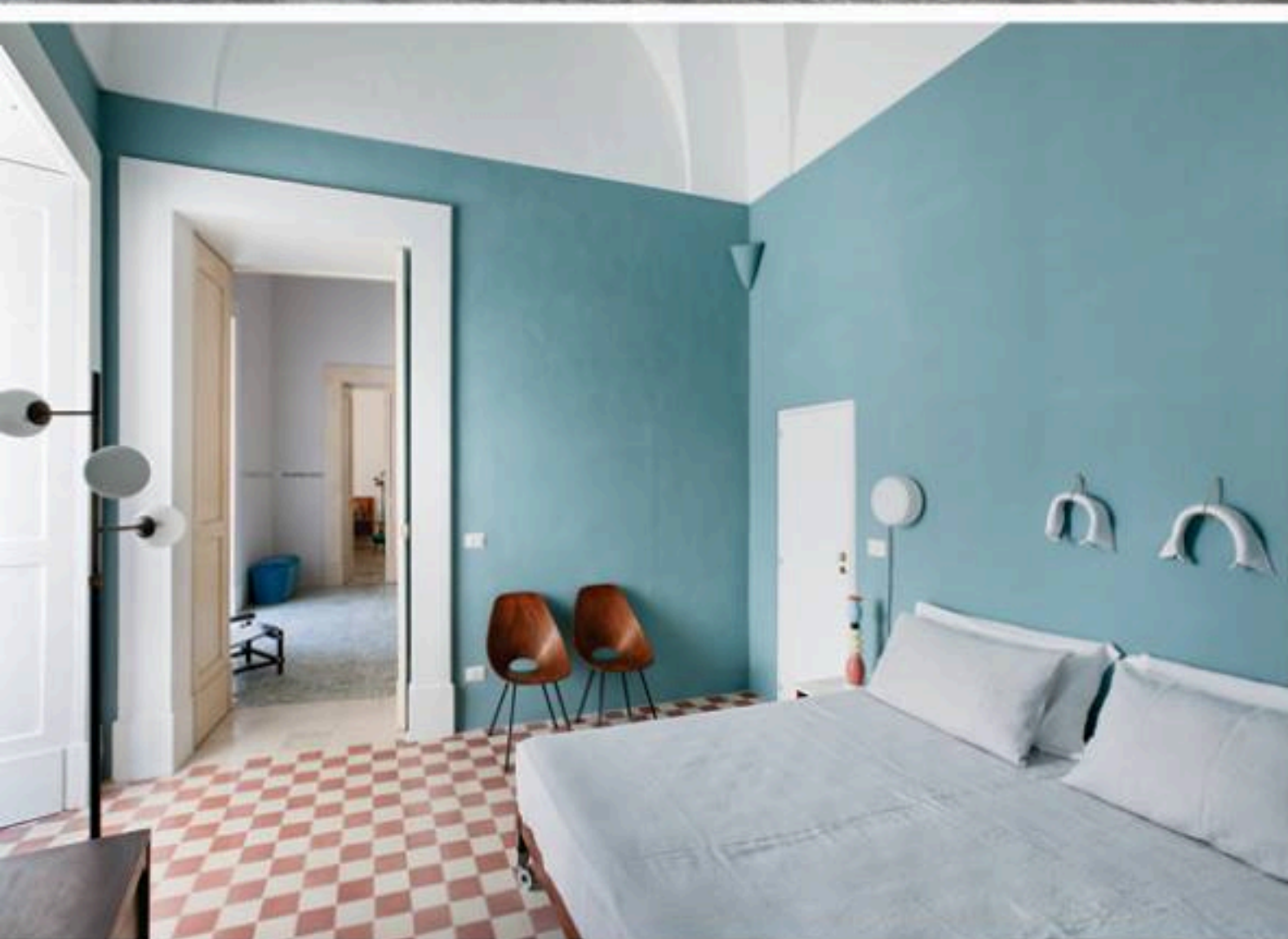
Galatina, Italy

Project: Rocco Minerba
Interior decoration: Pizzini Christian & Antonio Lodovico Scolari
Artists: Eduard Habicher, Giovanni Lamorgese, Massimo Ruiu, Raffaele Quida, Roberto Visani, Ri Uso, Rider
Year of completion: 2014
Gross floor area: 400 m²
Materials used: original tiles, marble

This gorgeous contemporary dwelling pushes the frontiers of Mediterranean design in its reverence for the old and bold integration of the new. Built in 1713 and neglected for the last fifty years, this palace has been restored to all its glory with a refreshing modern twist. Marble floors and refined details, from the perfectly chosen lighting to the exquisite furniture, manifest a mélange of history,

elegant charm and contemporary shades and shapes. The interior style is vintage-inspired contemporary, designers of the mid-twentieth century such as Gio Ponti and Albini nestled alongside modern art by Eduard Habicher, Luigi Veronesi and Massimo Ruiu. This truly is a marvel of ingenuity, beauty and elegance.

from above to below, from left to right: living area with view over the rooftops, bedroom, office area



from left to right, from above to below: skylight in kitchen, outdoor living area, pool area on rooftop, lower floor plan

from above to below, from left to right: kitchen, bedroom, entrance with site-specific artwork "Iride" by Giovanni Lamorgese